

MUSTANG

LOW PROFILE PORTABLE BATCHING PLANT

Stephens 

CONCRETE PLANTS • Tompkinsville, KY

800-626-0200

www.stephensmfg.com





The Stephens Mustang is a lighter version of the much heavier Stephens Eagle plant. The Stephens Mustang normally only requires two axles for transportation. A Central Dust Collector can be optional if a 3rd axle is added.

To keep the plant's weight legal for two axles, many of the plant's standard features can NOT be changed.





STANDARD:

400 BBL in truss silo
Two (2) 10" Spline Drive screws
30" Transfer Conveyor
70 ton, 3 or 4 compartment aggregate bins
14' Travel height
Designed for seismic zone 2
12yd Aggregate Batcher
14yd Cement Batcher
3" water meter
10hp 120 gallon air compressor (15hp, 240 gallon optional)

NO TOP HATS, NO LARGER BINS,

**NO LARGER TRANSFER OR SCREW
CONVEYORS.**

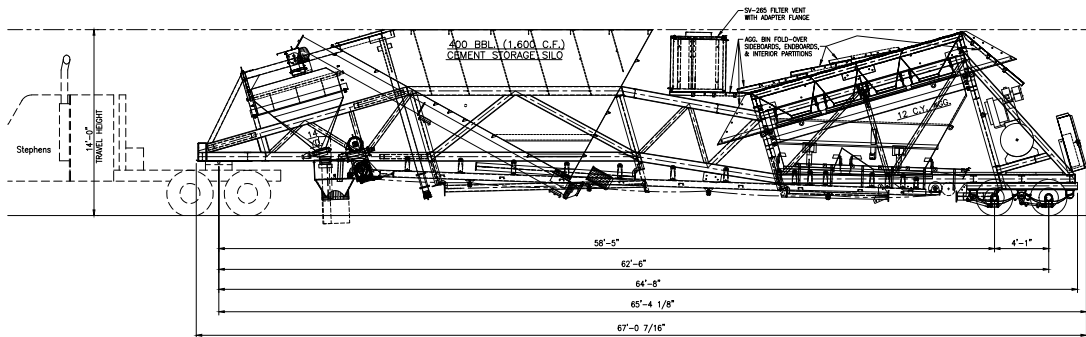
MAXIMUM 150 YARDS PER HOUR.

**FOR HEAVIER, BIGGER OR FASTER
PLANT PLEASE CONSIDER THE
STEPHENS EAGLE PLANT.**



Stephens

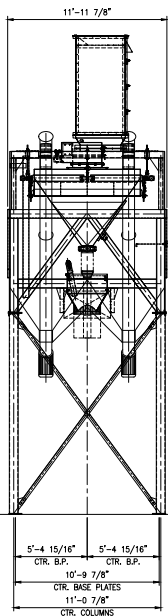
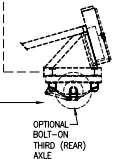
CONCRETE PLANTS • Tompkinsville, KY



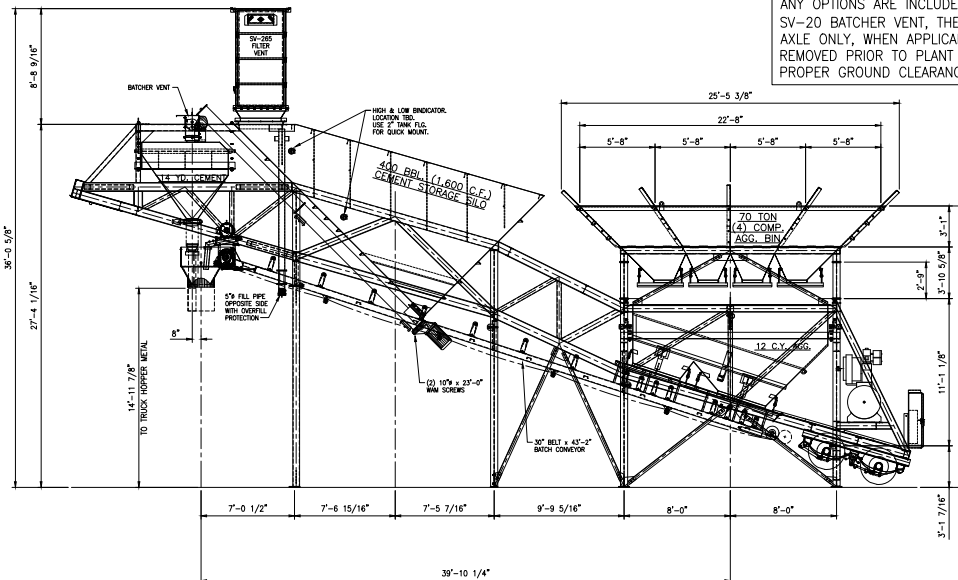
MUSTANG CONCRETE BATCH PLANT — TOWING ARRANGEMENT

FOR 30" BELT BATCH CONVEYOR & 60" DEEP TRUCK HOPPER
APPROXIMATE TOW WIDTH = 12'-0"
APPROXIMATE TOW WEIGHT = 65,000 LBS.

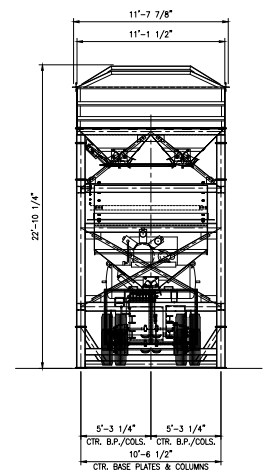
IMPORTANT TRANSPORTATION NOTE:
BOLT-ON THIRD (REAR) AXLE IS REQUIRED IF ANY OPTIONS ARE INCLUDED OTHER THAN AN SV-20 BATCHER VENT, THE THIRD (REAR) AXLE ONLY, WHEN APPLICABLE, MUST BE REMOVED PRIOR TO PLANT SET-UP TO ALLOW PROPER GROUND CLEARANCES.



COL. LINE "A"



MUSTANG CONCRETE BATCH PLANT — MAIN ELEVATION
FOR 30" BELT BATCH CONVEYOR & 60" DEEP TRUCK HOPPER



COL. LINE "D"



Stephens Manufacturing

P.O. BOX 488 • TOMPKINSVILLE, KY 42167

PHONE: 800-626-0200 • OUTSIDE the USA 270-487-6774

FAX: 270-487-8368

www.stephensmfg.com

Local Distributor

NOTE: All technical data subject to change without notice due to technical improvements.

Proud Members of:

